

PRODUCT CORE CAPABILITY



Positioning and Navigation

Visual SLAM

In Simultaneous Localization And Mapping (SLAM), visual SLAM has the characteristics of rich information, high positioning accuracy and wide detection range. Through the high-definition camera, information can be obtained from the current environment, and the current position and posture of the robot can be quickly confirmed.

Laser SLAM

Laser sensor can generate a map of its environment. It is both a fast and accurate approach and can be used in a wide range of environments and conditions.

Voice Interaction

Lucki applies Google Cloud Dialogflow to leverage NLP (natural language processing) to support voice commands and customer Q&A.

Lucki can also recognize human speech in high noise level environments. It integrates a 6-mics ring array with 5-meter radio range. This allows 94% speech recognition rate with 75dB noise.



INTRODUCTION

ORION STAR is a leading global service robot solution company founded in September 2016. It employs self-developed artificial intelligence technologies such as voice interaction, and visual navigation and integrates unique product development and technical application capabilities. ORION STAR has released ORION STAR AI Robot Greeting Mini and AI Delivery Robot Lucki. It has established the OrionOS, an open platform for Orion robots, and is driven to use AI technology to deliver customer service back to the table.

 www.orionstarusa.com

 info@orionstarusa.com

 ORIONSTAR USA

ORIONSTAR

AI DELIVER ROBOT LUCKI



WWW.ORIONSTARUSA.COM

PRODUCT DESCRIPTION

Lucki is an efficient delivery robot that can improve customers' service satisfaction and heighten the quality of hospitality services provided. Customers will also appreciate Lucki's delivery features.

Overall Size	21 in x 20 in x 52 in
Net Weight	104 lbs (with food protector)
Loading Space	3 tiers /4 tiers adjustable, the area of each tier is 1.9 sq. ft
Tray Load	Single tray load 22lbs, maximum 88lbs in total
Hardware Platform	Qualcomm 8-core chip + 32-bit Microchip MCU+Intel® RealSense™ depth sensor
Battery Life	12 ~ 15 hrs (according to actual working conditions)
Charging Time	3.5 hrs
Network Supports	4G supports TDD-LTE, FDD-LTE WiFi supports 2.4G/5G
Navigation System	LiDAR + Visual Positioning + Visual Obstacle Avoidance + Odometer + IMU
Navigation Method	Pure laser SLAM solution (in cruising mode), laser+vision combination SLAM solution



DETAILS

Wide-open Large Tray

- 17x20 inches large trays, to fit in as many dishes you want.
- Adjustable trays that fit all delivery needs.

Independent Suspension

Automotive-grade suspension system, keeps the robot stable and in control.

Accessories

- The wide-open large trays can be equipped with silicone tray pads, which are resistant to dirt and non-slip.
- Robot headgear and body stickers make your machine more personal and can attract more customers.

Food Protector

The fully transparent acrylic material is easy to clean, disinfect, install and disassemble, with airtightness up to 80%, which can ensure the safety and hygiene of the delivery process.

FEATURES



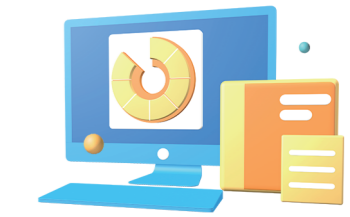
Stable and Accurate Delivery

- Lucki can deliver 400 times a day on average, and can deliver up to 4 tables each time, which is three times the previous efficiency.
- Intelligent bussing, one machine for multiple purposes.



Diversified Promotion

Based on powerful voice capabilities, Lucki can conduct diversified promotion activities. It can recommend signature dishes through custom advertisements, and can also play advertisements to attract customers during the cruise.



Convenient Data Management

Lucki can be managed through H5 and redash. For example, you can query the usage data of the robot with one click, and customize the advertising words and formulate your own robot.

ALL SCENARIOS COVERED



Restaurant



Nursing home



Supermarket



Factory



Hotel



club